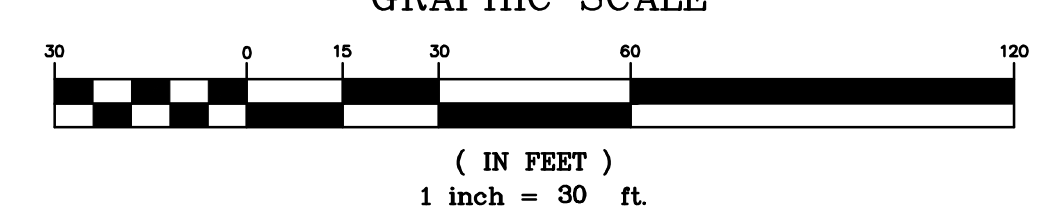


CENTERLINE LINCOLN AVENUE
 HORIZ SCALE: 1" = 30'
 VERT SCALE: 1" = 3'



DRAWING ALTERATION
 THE FOLLOWING IS AN EXCERPT FROM THE NEW YORK EDUCATION LAW ARTICLE 145 SECTION 7209 AND APPLIES TO THIS DRAWING:
 "IT IS A VIOLATION OF THIS LAW FOR ANY PERSON UNLESS HE IS ACTING UNDER THE DIRECTION OF A LICENSED PROFESSIONAL ENGINEER OR LAND SURVEYOR TO ALTER AN ITEM IN ANY MANNER IF AN ITEM BEARING THE SEAL OF AN ENGINEER OR LAND SURVEYOR IS ALTERED, THE ALTERING ENGINEER OR LAND SURVEYOR SHALL AFFIX TO THE ITEM HIS SEAL AND THE NOTATION "ALTERED BY" FOLLOWED BY HIS SIGNATURE AND THE DATE OF SUCH ALTERATION AND A SPECIFIC DESCRIPTION OF THE ALTERATION."

AS ISSUED FOR PRELIMINARY REVIEW

1.	ISSUED FOR NYSDOH REVIEW	DAH	4/29/21
No.	Revisions and Descriptions	By	Date
Copyright © 2021 MRB Group All Rights Reserved			

Project Title: **VILLAGE WATER SYSTEM IMPROVEMENT PROJECT 2020 VILLAGE OF DANSVILLE LIVINGSTON COUNTY, NEW YORK**

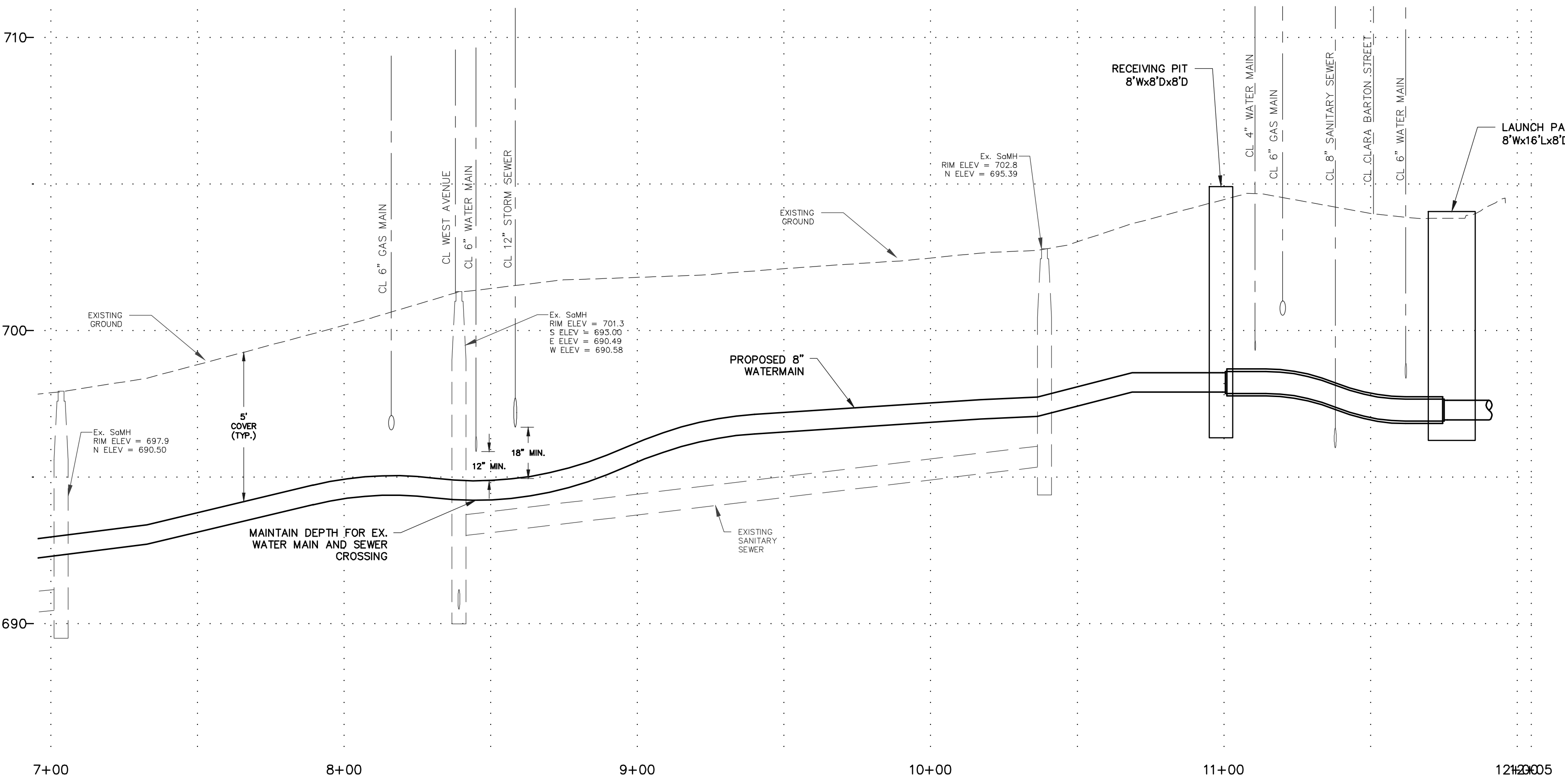
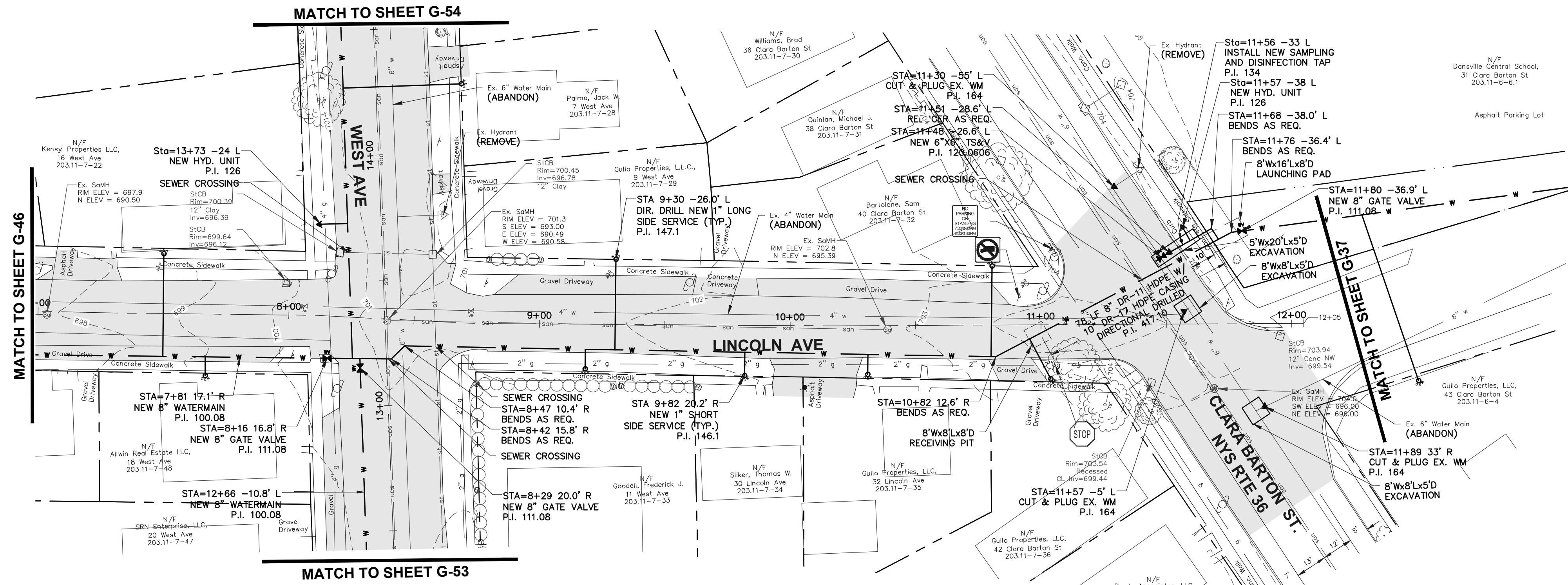
Drawing Title: **PLAN AND PROFILE**

Drawn By:	BJJ
Checked By:	GJH
Scale:	AS SHOWN
Date:	1/2021

Sheet No.	G-46
of	TOT
Project No.	0410.20002

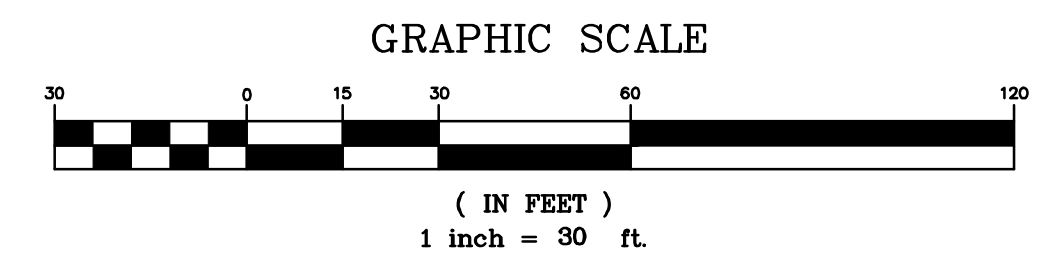
MRB group
 Engineering, Architecture & Surveying, D.P.C.
 The Culver Road Armory, 145 Culver Road,
 Suite 160, Rochester, New York 14620
 Phone: 585-381-9250
 www.mrbgroup.com

Sheet No.	G-46
of	TOT
Project No.	0410.20002



CONTENTS TO BE HANDLED	PIPE DATA	
	CARRIER PIPE	CASING PIPE
NORMAL OPERATING PRESSURE	100 #	ATMOSPHERIC
NOMINAL SIZE OF PIPE	8"	10"
OUTSIDE DIAMETER	9.050"	11.100"
INSIDE DIAMETER	7.30"	9.71"
WALL THICKNESS	0.823"	0.653"
WEIGHT PER FOOT	9.32#	9.41#
MATERIAL	HIGH DENSITY POLYETHYLENE	HIGH DENSITY POLYETHYLENE
PROCESS OF MANUFACTURE	EXTRUSION	EXTRUSION
SPECIFICATION	AWWA C906-99	AWWA C906-99
GRADE OR CLASS	DR-11	DR-17
TEST PRESSURE	150 PSI	0
TYPE OF JOINT	BUT FUSION	BUT FUSION
TYPE OF COATING	NONE	NONE
DETAILS OF CATHODIC PROTECTION	NONE	NONE
DETAILS OF SEAL OR PROTECTION AT ENDS OF CASING	N.A.	N.A.
METHOD OF INSTALLATION	DIRECTIONALLY DRILLED	DIRECTIONALLY DRILLED

CENTERLINE LINCOLN AVENUE
 HORIZ SCALE: 1" = 30'
 VERT SCALE: 1" = 3'



DRAWING ALTERATION
 THE FOLLOWING IS AN EXCERPT FROM THE NEW YORK EDUCATION LAW ARTICLE 145 SECTION 7209 AND APPLIES TO THIS DRAWING.
 "IT IS A VIOLATION OF THIS LAW FOR ANY PERSON UNLESS HE IS ACTING UNDER THE DIRECTION OF A LICENSED PROFESSIONAL ENGINEER OR LAND SURVEYOR TO ALTER AN ITEM IN ANY MANNER BEARING THE SEAL OF AN ENGINEER OR LAND SURVEYOR. IF ALTERED, THE ALTERING ENGINEER OR LAND SURVEYOR SHALL AFFIX TO THE ITEM HIS SEAL AND THE NOTATION "ALTERED BY" FOLLOWED BY HIS SIGNATURE AND THE DATE OF SUCH ALTERATION AND A SPECIFIC DESCRIPTION OF THE ALTERATION."

AS ISSUED FOR PRELIMINARY REVIEW

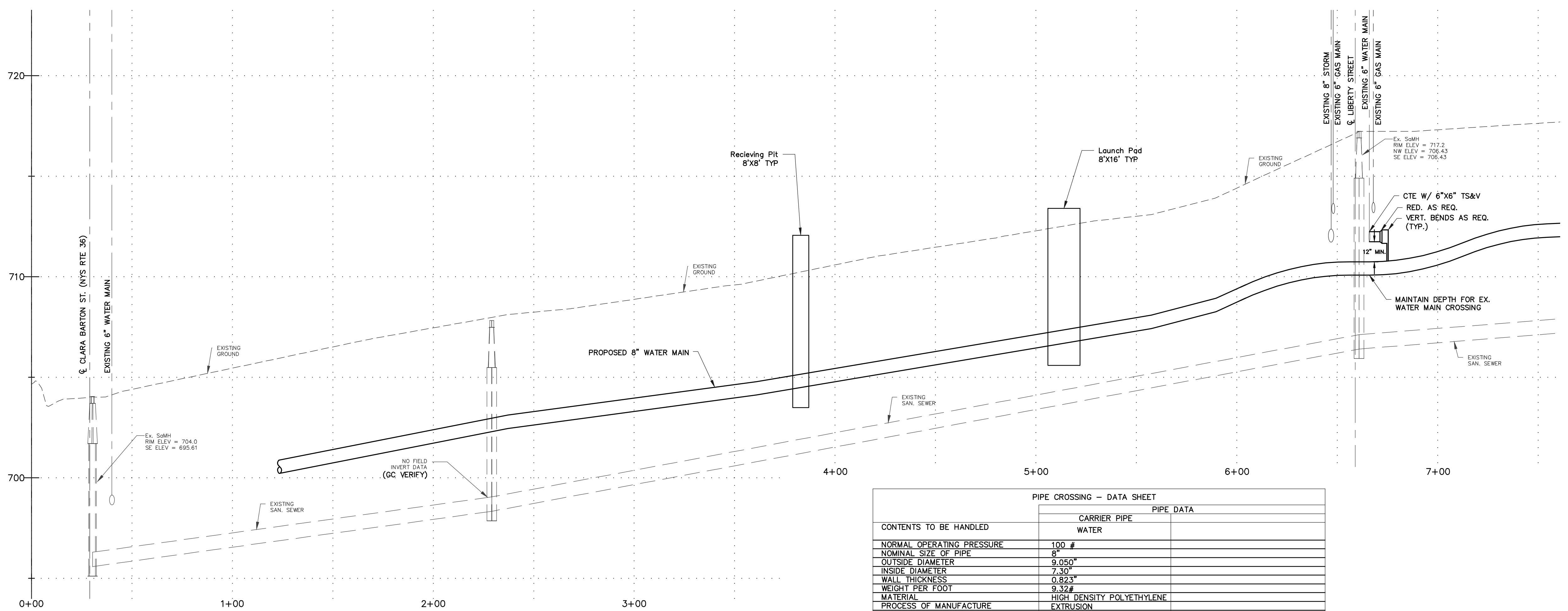
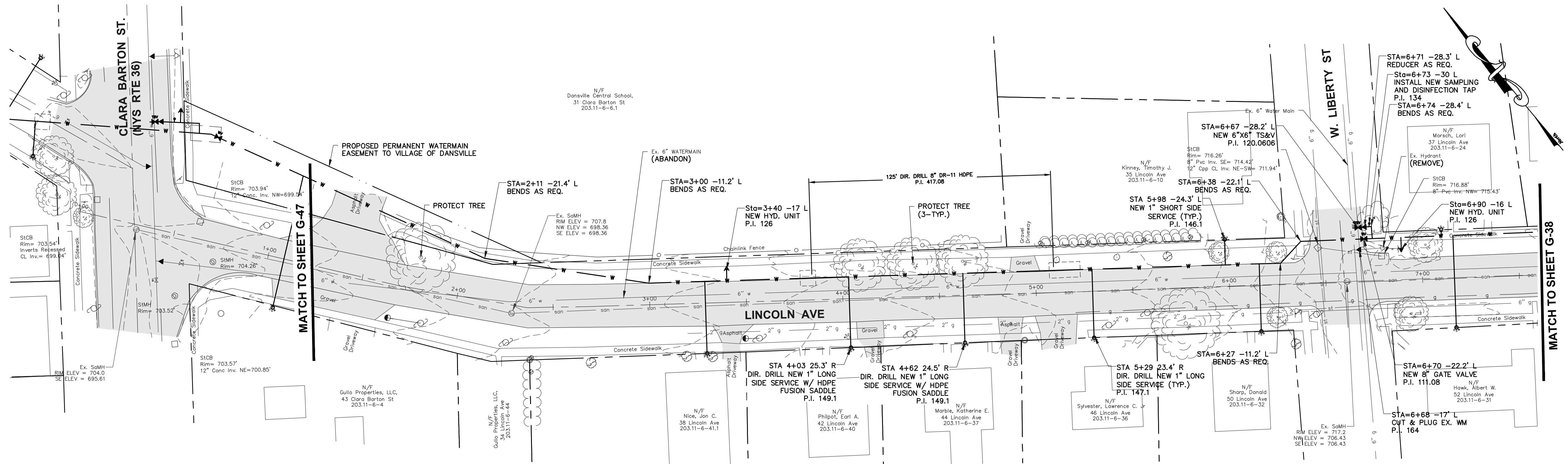
Project Title:	VILLAGE WATER SYSTEM IMPROVEMENT PROJECT 2020 VILLAGE OF DANSVILLE LIVINGSTON COUNTY, NEW YORK
Drawn By:	BJJ
Checked By:	GJH
Scale:	AS SHOWN
Date:	1/2021
Issued For:	NYSDOH REVIEW
By:	DAH
Date:	4/29/21
Copyright © 2021 MRB Group All Rights Reserved	

Project Title: VILLAGE WATER SYSTEM IMPROVEMENT PROJECT 2020 VILLAGE OF DANSVILLE LIVINGSTON COUNTY, NEW YORK
 Drawing Title: PLAN AND PROFILE

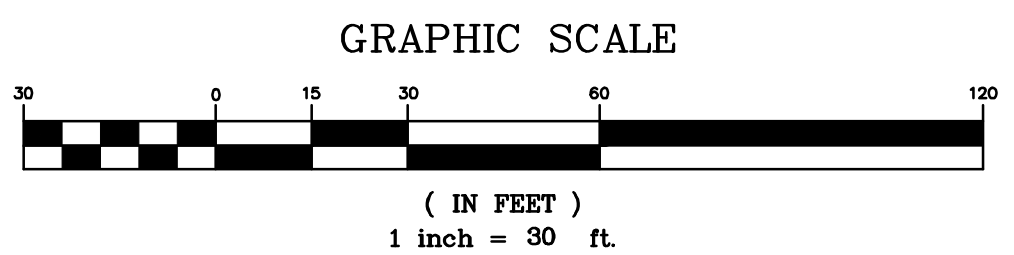
LINCOLN STREET

MRB group
 Engineering, Architecture & Surveying, D.P.C.
 The Culver Road Armory, 145 Culver Road,
 Suite 160, Rochester, New York 14620
 Phone: 585-381-9250
 www.mrbgroup.com

Sheet No. **G-47**
 of **TOT**
 Project No. **0410.20002**



PIPE CROSSING - DATA SHEET	
CONTENTS TO BE HANDLED	CARRIER PIPE
	PIPE DATA
NORMAL OPERATING PRESSURE	100 #
NOMINAL SIZE OF PIPE	8"
OUTSIDE DIAMETER	9.050"
INSIDE DIAMETER	7.30"
WALL THICKNESS	0.823"
WEIGHT PER FOOT	9.32#
MATERIAL	HIGH DENSITY POLYETHYLENE
PROCESS OF MANUFACTURE	EXTRUSION
SPECIFICATION	AWWA C906-99
GRADE OR CLASS	DR-11
TEST PRESSURE	150 PSI
TYPE OF JOINT	BUT FUSION
TYPE OF COATING	NONE
DETAILS OF CATHODIC PROTECTION	NONE
DETAILS OF SEAL OR PROTECTION AT ENDS OF CASING	N.A.
METHOD OF INSTALLATION	DIRECTIONALLY DRILLED



DRAWING ALTERATION THE FOLLOWING IS AN EXCERPT FROM THE NEW YORK EDUCATION LAW ARTICLE 145 SECTION 7209 AND APPLIES TO THIS DRAWING. IT IS A VIOLATION OF THIS LAW FOR ANY PERSON UNLESS HE IS ACTING UNDER THE DIRECTION OF A LICENSED PROFESSIONAL ENGINEER OR LAND SURVEYOR TO ALTER AN ITEM IN ANY MANNER IF AN ITEM BEARING THE SEAL OF AN ENGINEER OR LAND SURVEYOR IS ALTERED, THE ALTERING ENGINEER OR LAND SURVEYOR SHALL AFFIX TO THE ITEM HIS SEAL AND THE NOTATION "ALTERED BY" FOLLOWED BY HIS SIGNATURE AND THE DATE OF SUCH ALTERATION AND A SPECIFIC DESCRIPTION OF THE ALTERATION.

AS ISSUED FOR PRELIMINARY REVIEW

1.	ISSUED FOR INYSDOH REVIEW	DAH	4/29/21
	Revisions and Descriptions	By	Date

Project Title: **VILLAGE WATER SYSTEM IMPROVEMENT PROJECT 2020 VILLAGE OF DANSVILLE LIVINGSTON COUNTY, NEW YORK**

Drawing Title: **PLAN AND PROFILE (ALTERNATE)**

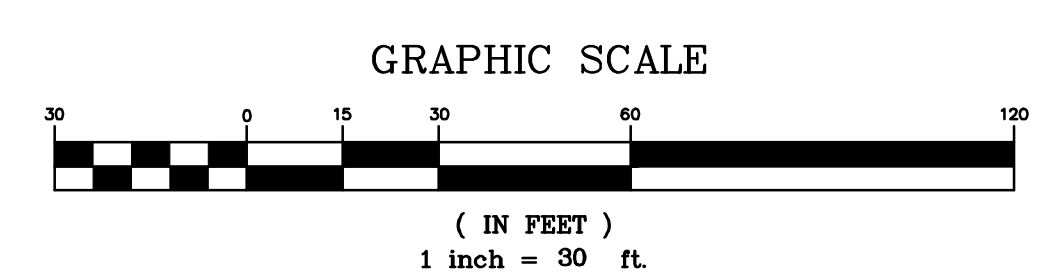
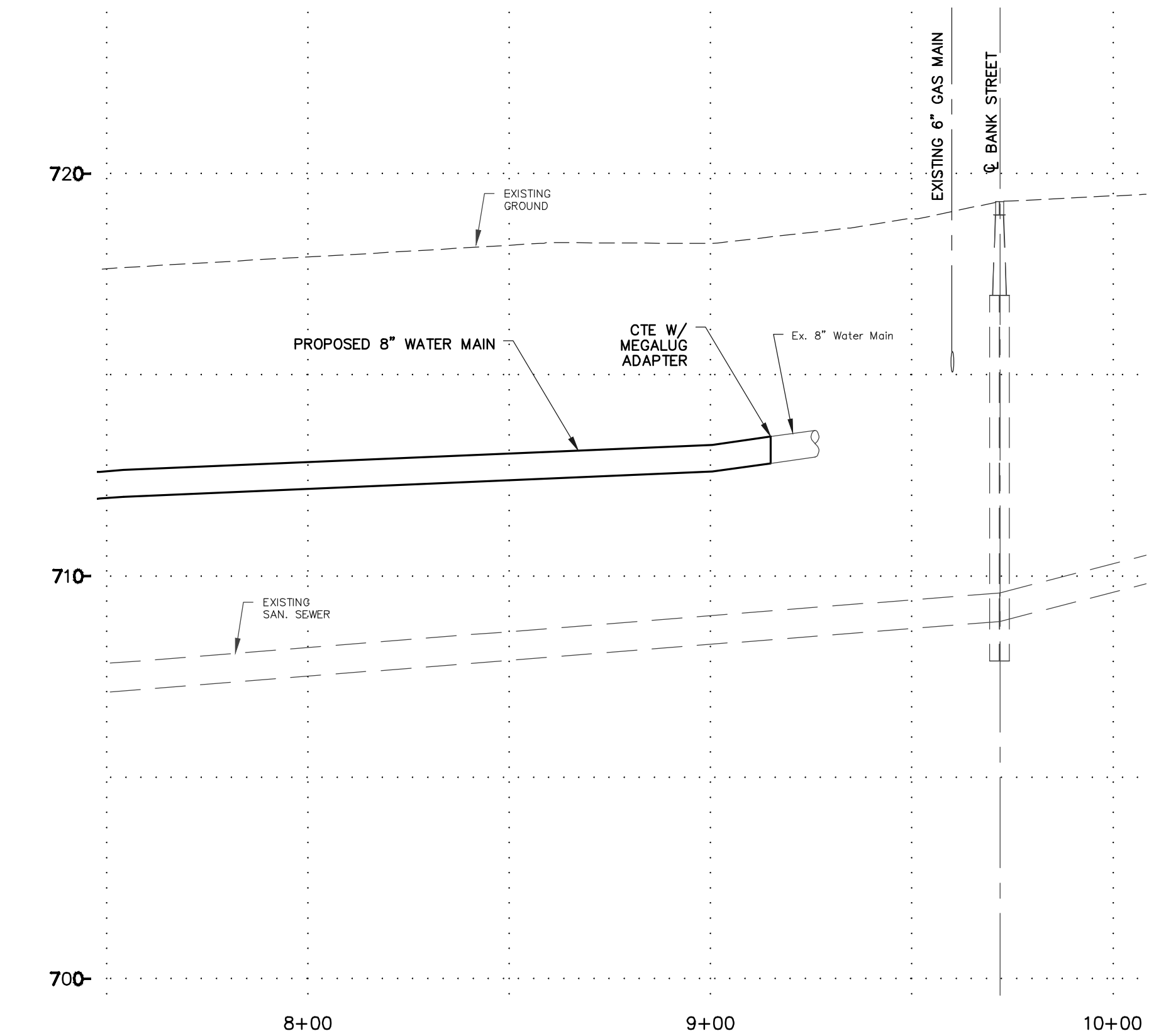
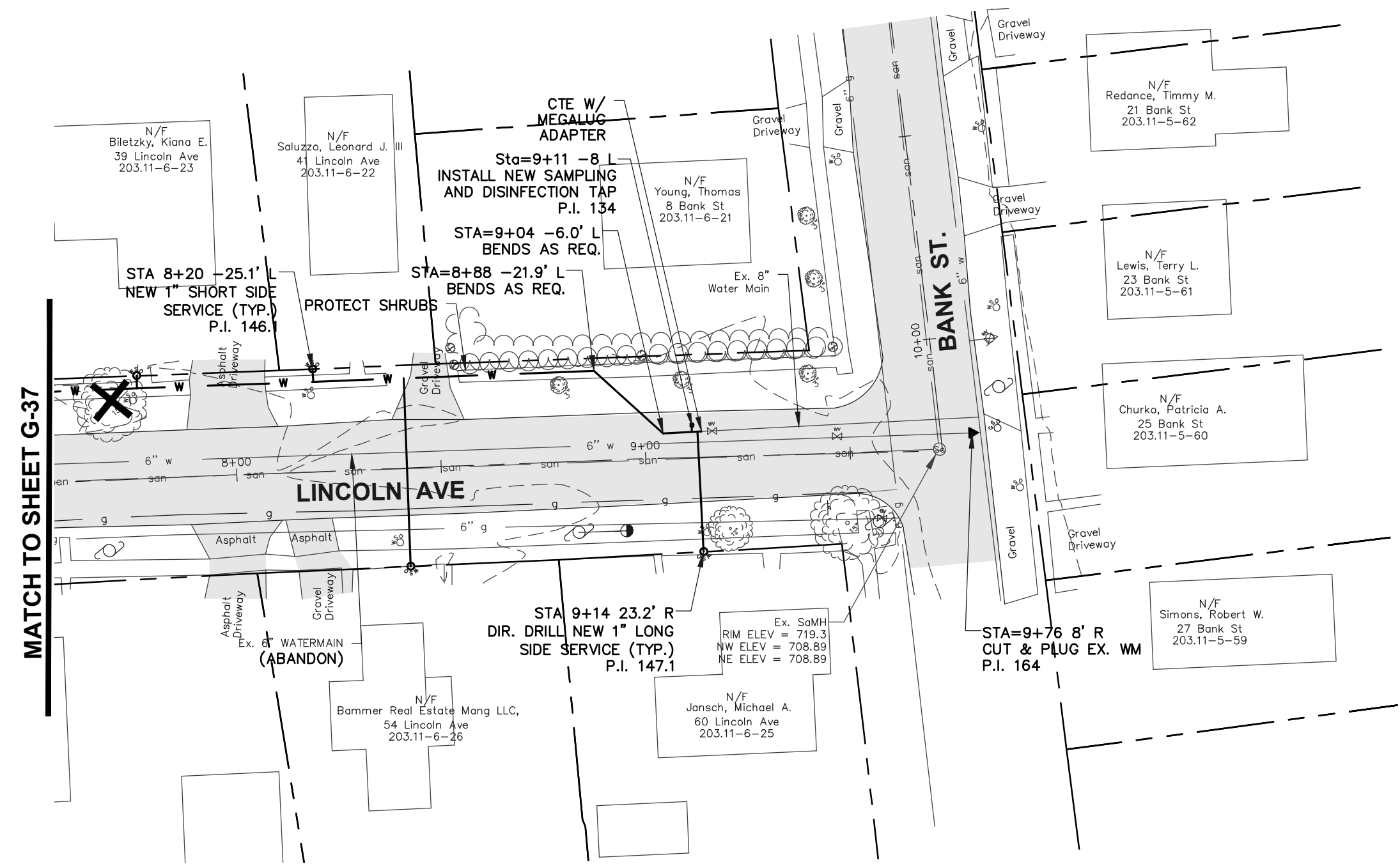
Drawn By: BJJ
 Checked By: GJH
 Scale: AS SHOWN
 Date: 1/2021

JEFFERSON ST EXT - EARLE DR

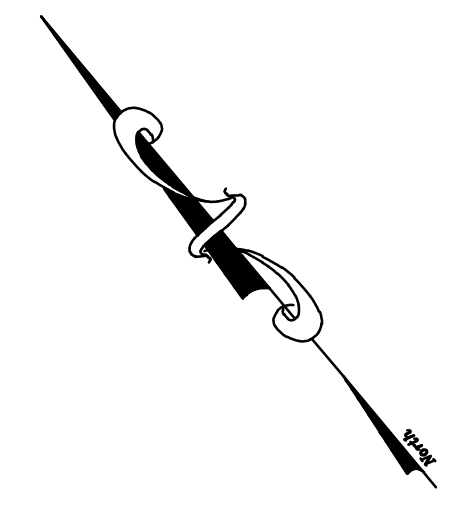
MRB group
 Engineering, Architecture & Surveying, D.P.C.
 The Culver Road Armory, 145 Culver Road,
 Suite 160, Rochester, New York 14620
 Phone: 585-381-9250
 www.mrbgroup.com

Sheet No. **G-37A**
 of **TOT**
 Project No. **0410.20002**

Copyright © 2021 MRB Group All Rights Reserved



DRAWING ALTERATION
THE FOLLOWING IS AN EXCERPT FROM THE NEW YORK EDUCATION LAW ARTICLE 145 SECTION 7209 AND APPLIES TO THIS DRAWING:
"IT IS A VIOLATION OF THIS LAW FOR ANY PERSON UNLESS HE IS ACTING UNDER THE DIRECTION OF A LICENSED PROFESSIONAL ENGINEER OR LAND SURVEYOR TO ALTER AN ITEM IN ANY MANNER IF AN ITEM BEARING THE SEAL OF AN ENGINEER OR LAND SURVEYOR IS ALTERED, THE ALTERING ENGINEER OR LAND SURVEYOR SHALL AFFIX TO THE ITEM HIS SEAL AND THE NOTATION "ALTERED BY" FOLLOWED BY HIS SIGNATURE AND THE DATE OF SUCH ALTERATION AND A SPECIFIC DESCRIPTION OF THE ALTERATION."



AS ISSUED FOR PRELIMINARY REVIEW

1.	ISSUED FOR INYSDOH REVIEW	DAH	4/29/21
No.	Revisions and Descriptions	By	Date
Copyright © 2021 MRB Group All Rights Reserved			

Project Title: **VILLAGE WATER SYSTEM IMPROVEMENT PROJECT 2020 VILLAGE OF DANSVILLE LIVINGSTON COUNTY, NEW YORK**

Drawing Title: **PLAN AND PROFILE (ALTERNATE)**

Drawn By: BJJ
Checked By: GJH
Scale: AS SHOWN
Date: 1/2021

JEFFERSON ST EXT - EARLE DR

MRB group
Engineering, Architecture & Surveying, D.P.C.
The Culver Road Armory, 145 Culver Road,
Suite 160, Rochester, New York 14620
Phone: 585-381-9250
www.mrbgroup.com

Sheet No. **G-38A**
of **TOT**
Project No. **0410.20002**